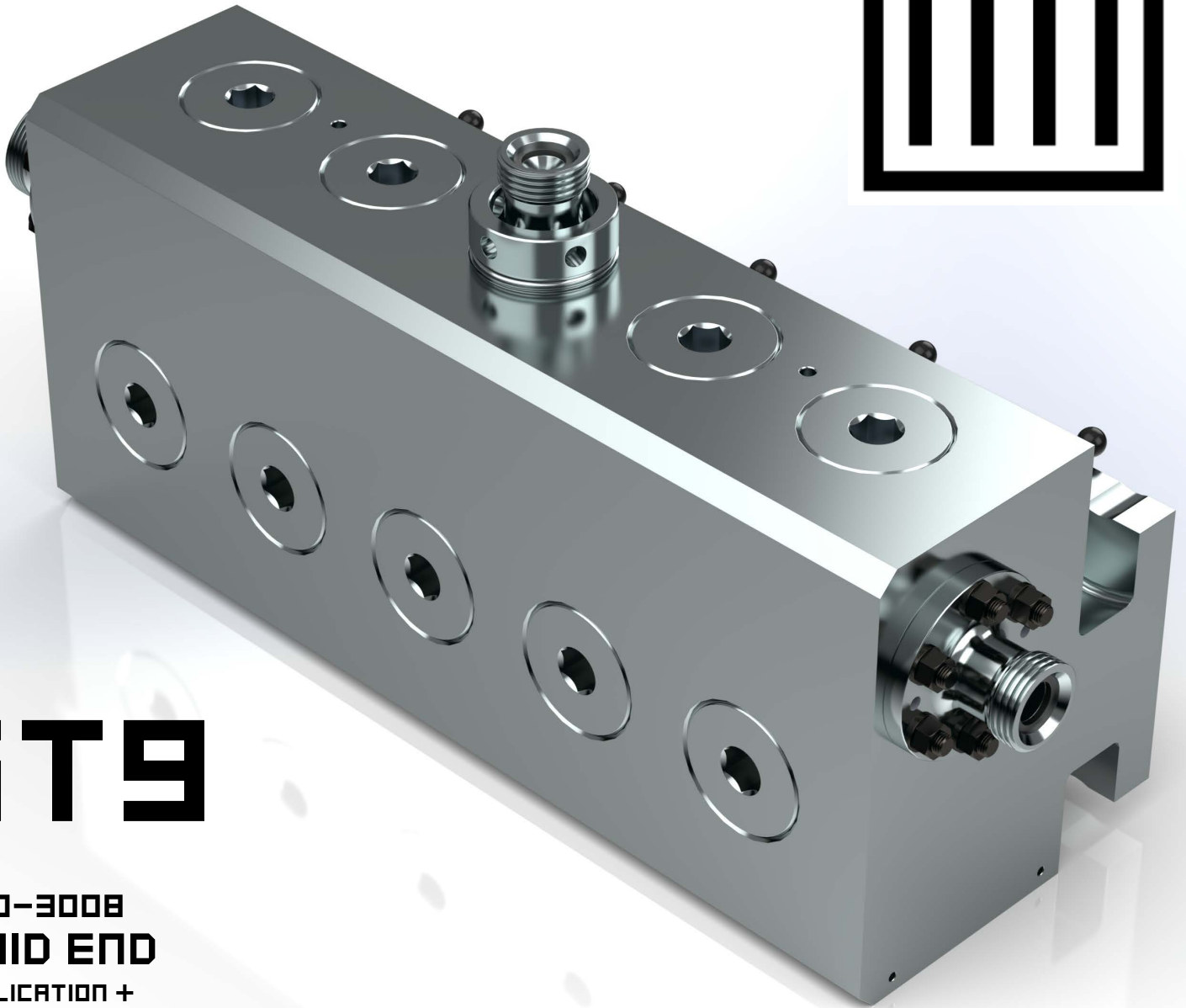


RIG-2001-02



**ST9**

**150-3008**  
**FLUID END**  
APPLICATION +  
INSTALLATION

## LIFTING

The ST9 fluid end has two threaded holes for lifting eyes on top of the block. Use of these provides the safest and most level manner of lifting, moving, and installing the ST9 fluid end.

Lifting Eye Thread: 3/4"-10 UNC

## INSTALLATION

### **POWER END**

Please consult the manufacturer's guidelines when using their stay rods.

ST9 uses a two piece stay rod. Lube threads and install to hand tight.

One piece stay rod designs generally require lubed threads and torque to 1000 ft/lbs. Defer to the respective manufacturer's guidelines always.

### **FLUID END**

Lube all threads and install the fluid end nuts onto the stay rods. Torque to 2000 ft/lbs in the pattern shown below.

