

PRODUCT:

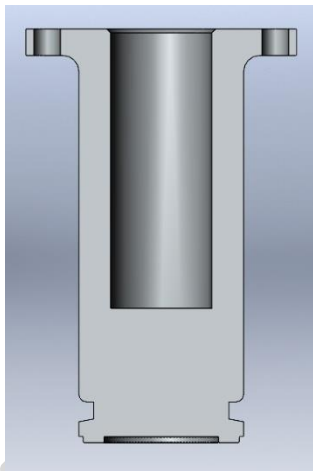
- ST9-130-0116 REV0
- ST9-130-0116 REV1

MFR: ST9 Gas & Oil LLC

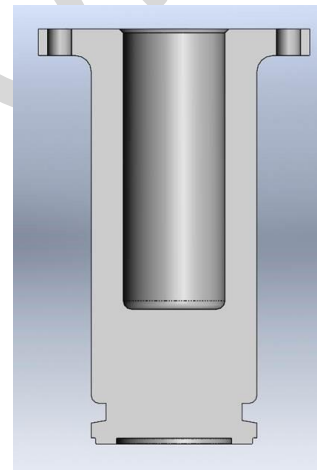
MODIFICATION: The pony rod on ST9 quint power ends has been modified internally to reduce stress cracking. No exterior dimensions are changed that will affect product fitment.

DETAILS: After seeing several instances of ST9 pony rods breaking at an area of high stress concentration, the decision was made to add a ¼” internal radius to the hollow core. This reduces the stress concentration and possibility of cracking under high rod load.

The new part ST9-130-0116 REV1 is backwards compatible with ST9-130-0116 REV0. All future ST9 power ends will come assembled with REV1. No further change is needed.



130-0116 REV0 (No Internal Radius)



130-0116 REV1 (Internal Radius)



Cracked REV0



Stamped REV0



REV1 Stamped



REV1 Internal Radius

FOR MORE INFORMATION CONTACT:



Alex Booth

Product Manager

M: +1 (832) 326-6774

E: booth.alex@ST9go.com

www.ST9go.com